

# Middletown Township



***2016 Budget Presentation***  
***November 9, 2015***

# Presentation Outline

- Budget Overview
- The Budget Process
- 2016 Revenue and Expenditure Highlights



# Budget Overview

- Balanced budget -  
**\$32,006,543**
- **0.5%** decrease from 2015
- No structural imbalance in General Fund
- No proposed emergency transfer from Investment Fund to General Fund





# Budget Overview

- Culture of cost containment
- Solicitation of competitive proposals
- Aggressively seeking grant revenue – more than \$2.4 million in 2014 and 2015
- Revenue from Earned Income Tax



# Financial Achievements

- Bond rating
- Certificate of Achievement for Excellence in Financial Reporting





# Emphasis on Infrastructure

- 2015 was second year of 15-Year Road Improvement Program
- More than 30 miles of roadways paved in past two years
- 2016 budget includes \$900,000 for Year 3

## 2016 Budget Overview - Governmental Funds

<b>Fund</b>	<b>2015 Proposed Expenditures</b>
General	\$17,628,809
General Street Light	492,286
Fire Protection	1,094,584
Parks and Recreation	1,318,563
Ambulance and Rescue Squad	206,403
Road Machinery	182,017
Fire Hydrant	56,856
Debt Service	2,752,007
Capital Reserve	2,415,860
Investment	42,000
Highway Aid	1,394,436
Sanitation Fund	4,096,902
Curb Assessment	0
Fire Apparatus	325,820
<b>Total</b>	<b>\$32,006,543.00</b>

## 2016 Budget Overview - Proprietary Funds

Middletown Country Club	\$125,593
Farm	43,850
<b>Total</b>	<b>\$169,443</b>



## 2016 Budget Overview - Fiduciary Funds

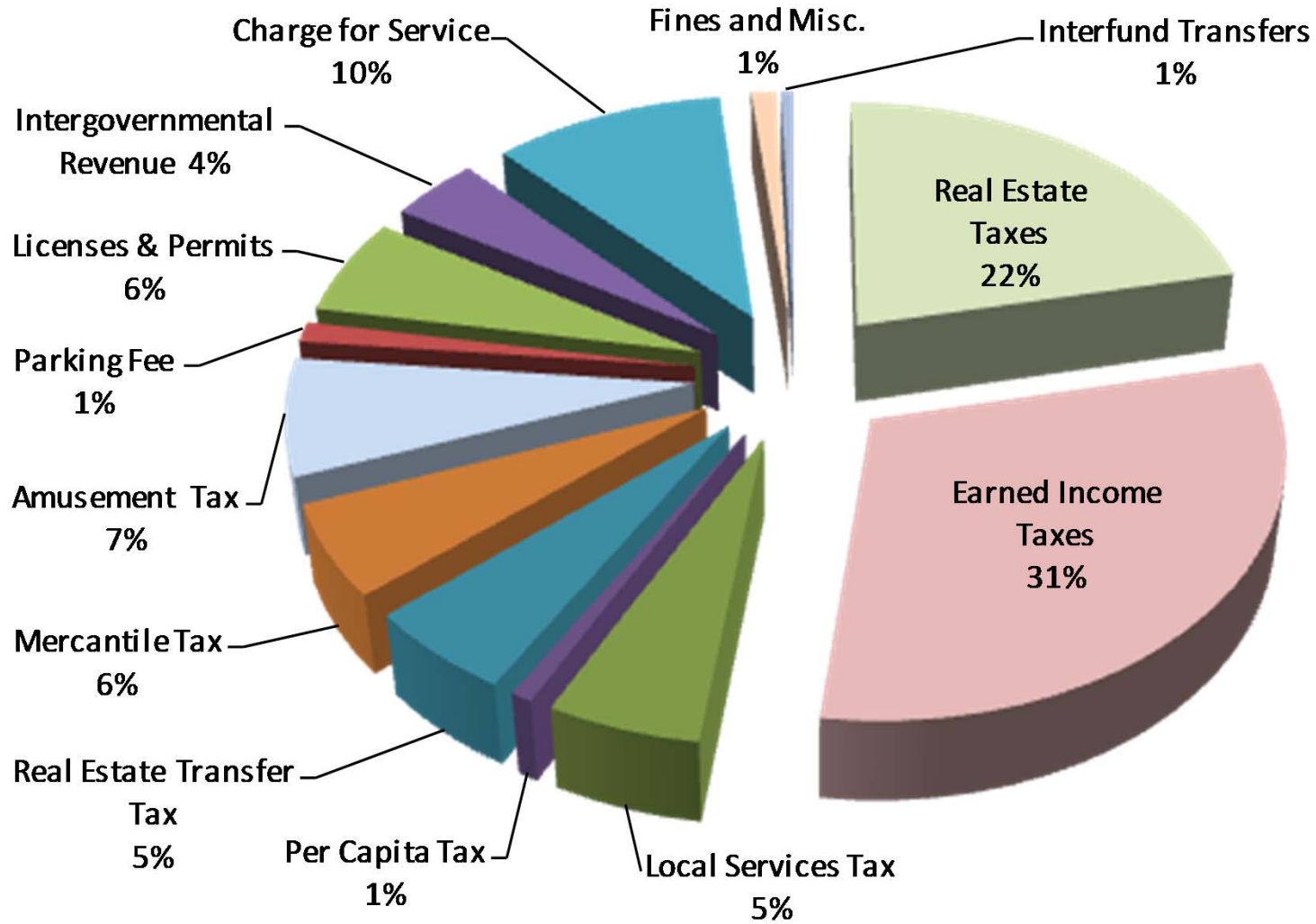
Police Pension	\$2,455,000
Police Post Retirement Benefits	10,000
General Pension	207,300
<b>Total</b>	<b>\$2,672,300</b>

# The Budget Process

- **August/September** –  
Departmental Budget Requests
- **October 12<sup>th</sup> & 26<sup>th</sup>** –  
Budget Workshop Meetings
- **November 9<sup>th</sup>** –  
Presentation of 2016 Budget  
Authorization to Advertise  
Preliminary Budget
- **December 7<sup>th</sup>** –  
Consideration of  
Final 2016  
Budget



# 2016 General Fund Revenue



# Real Estate Tax - Same Rate

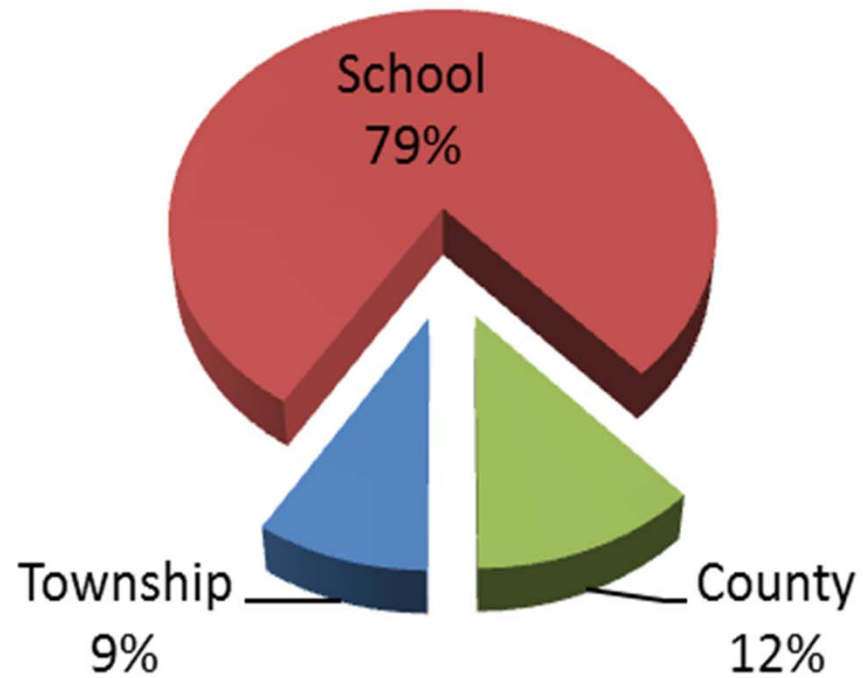
<b>Tax Fund</b>	<b>2015 Rate</b>	<b>2016 Proposed</b>
General Fund	7.340	7.340
General Street Lighting Fund	0.988	0.988
Fire Protection Fund	1.375	1.375
Park & Recreation Fund	1.920	1.920
Ambulance & Rescue Fund	0.395	0.395
Road Machinery Fund	0.300	0.300
Fire Hydrant Fund	0.107	0.107
Debt Service Fund	5.145	5.145
<b>Total Real Estate Tax Millage</b>	<b>17.570</b>	<b>17.570</b>



# Real Estate Tax

- Based on overall assessed value of **\$530,073,610**
- Average assessment - **\$29,194** which would equate to average tax of **\$513**

# Real Estate Tax





# Real Estate Taxes

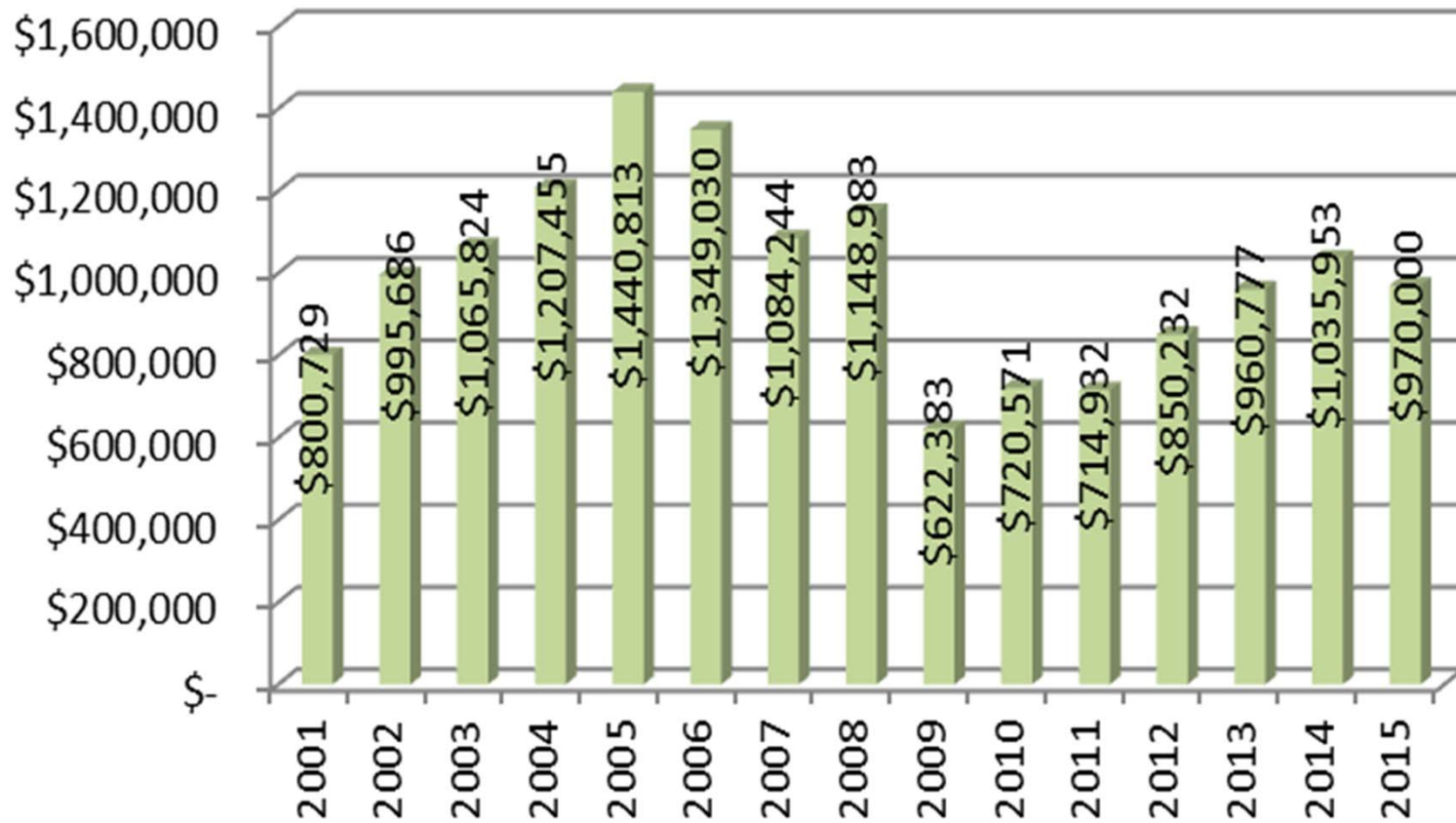
Development	Assessment Sample Property	Total Real Estate Tax Bill	Neshaminy School District	Bucks County	Middletown Township
Snowball Gate	\$29,650	<b>\$5,716</b>	\$4,507	\$688	<b>\$521</b>
Highland Park	\$25,620	<b>\$4,939</b>	\$3,894	\$595	<b>\$450</b>
Maple Point	\$43,600	<b>\$8,405</b>	\$6,627	\$1,012	<b>\$766</b>
Villages of Flowers Mill	\$34,200	<b>\$6,593</b>	\$5,198	\$794	<b>\$601</b>

# Real Estate Transfer Tax



- ✓ 1/2 of 1% of Real Estate Transfers
- ✓ 2016 revenues projected at \$970,000

# Real Estate Transfer Tax Revenues

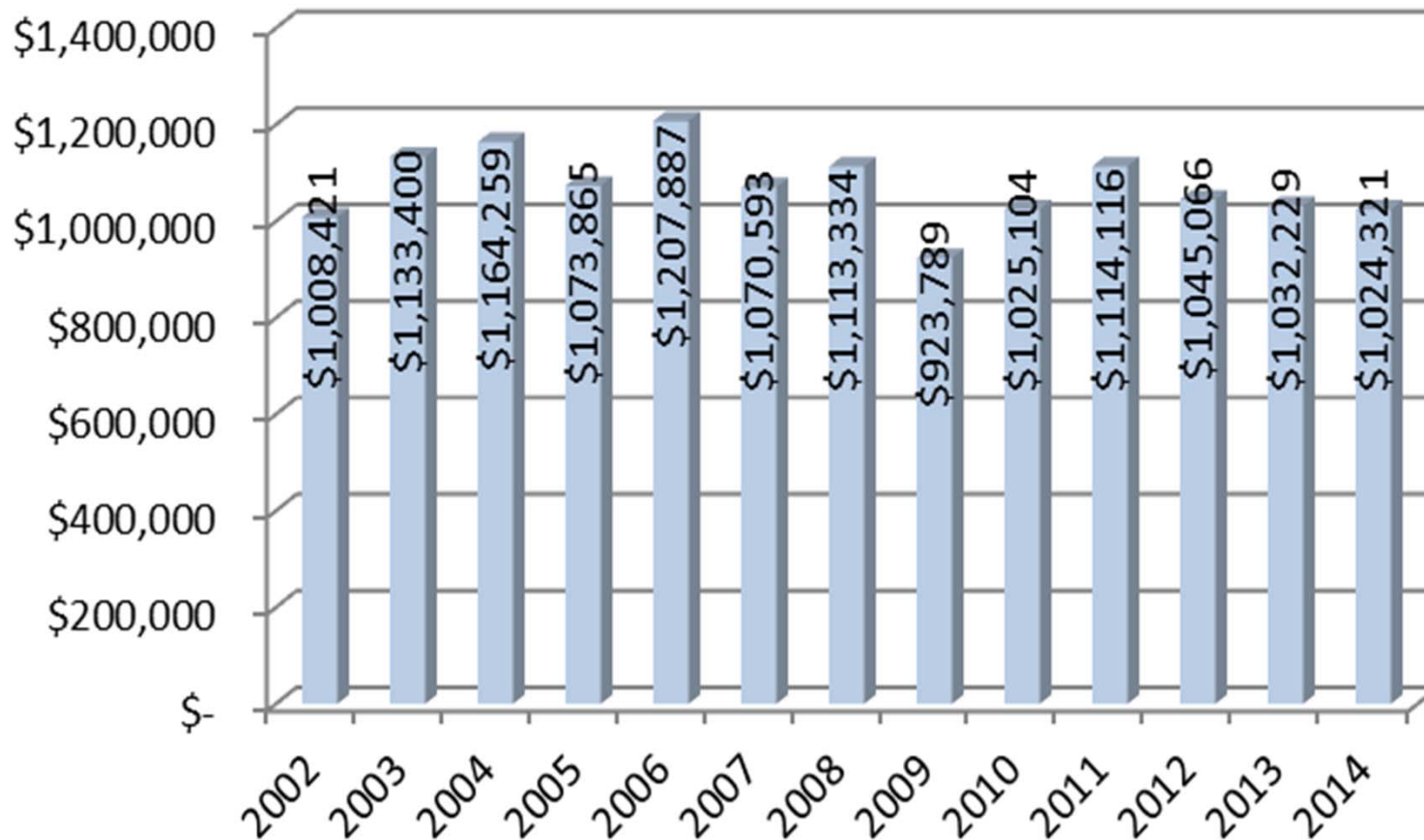


# Mercantile Tax



- ✓ 1/2 mill per \$1,000 gross receipts – wholesale
- ✓ 3/4 mill per \$1,000 gross receipts - retail
- ✓ 2016 revenues projected at \$1,025,000

# Mercantile Tax Revenues



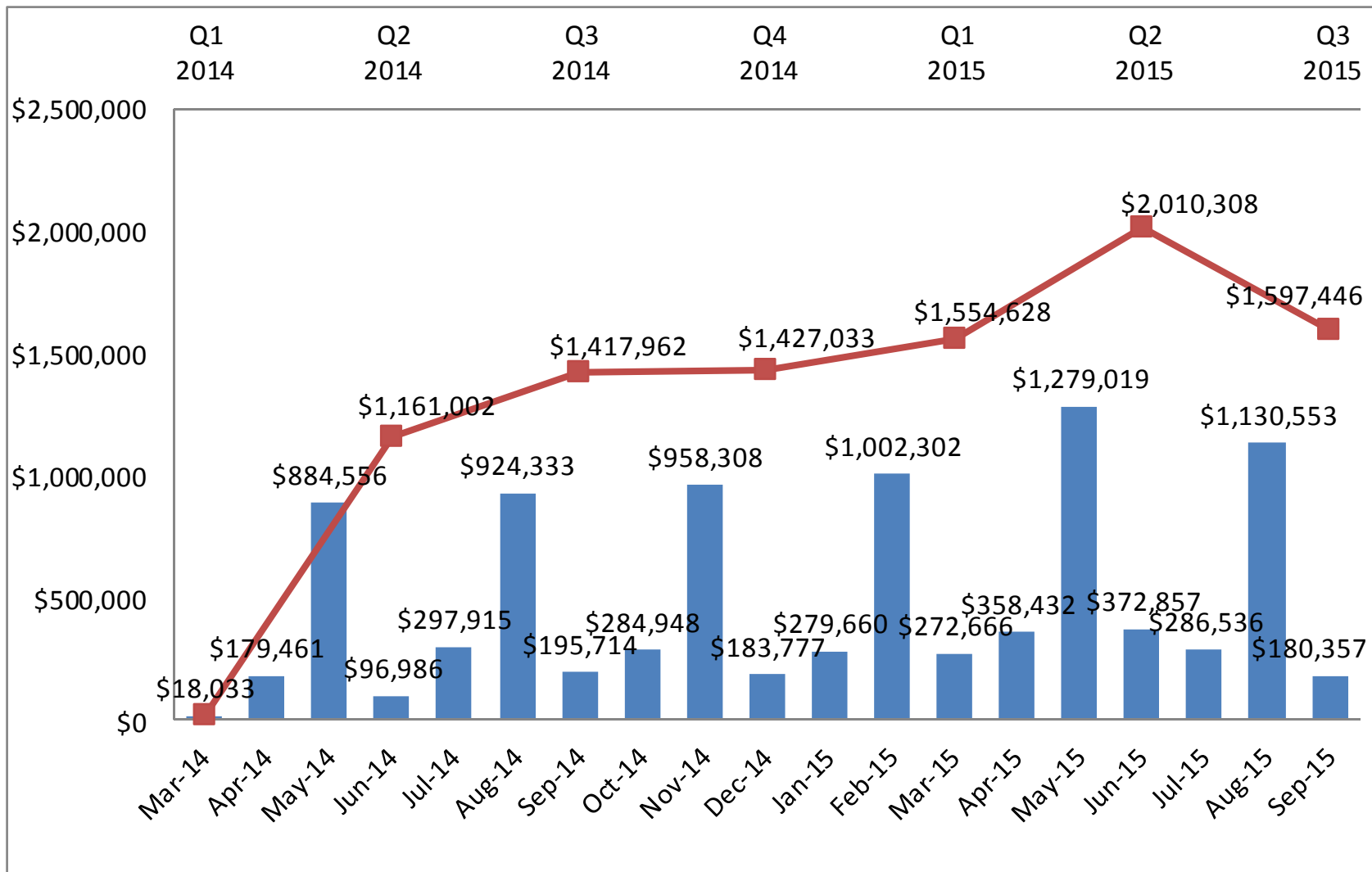


# Earned Income Tax

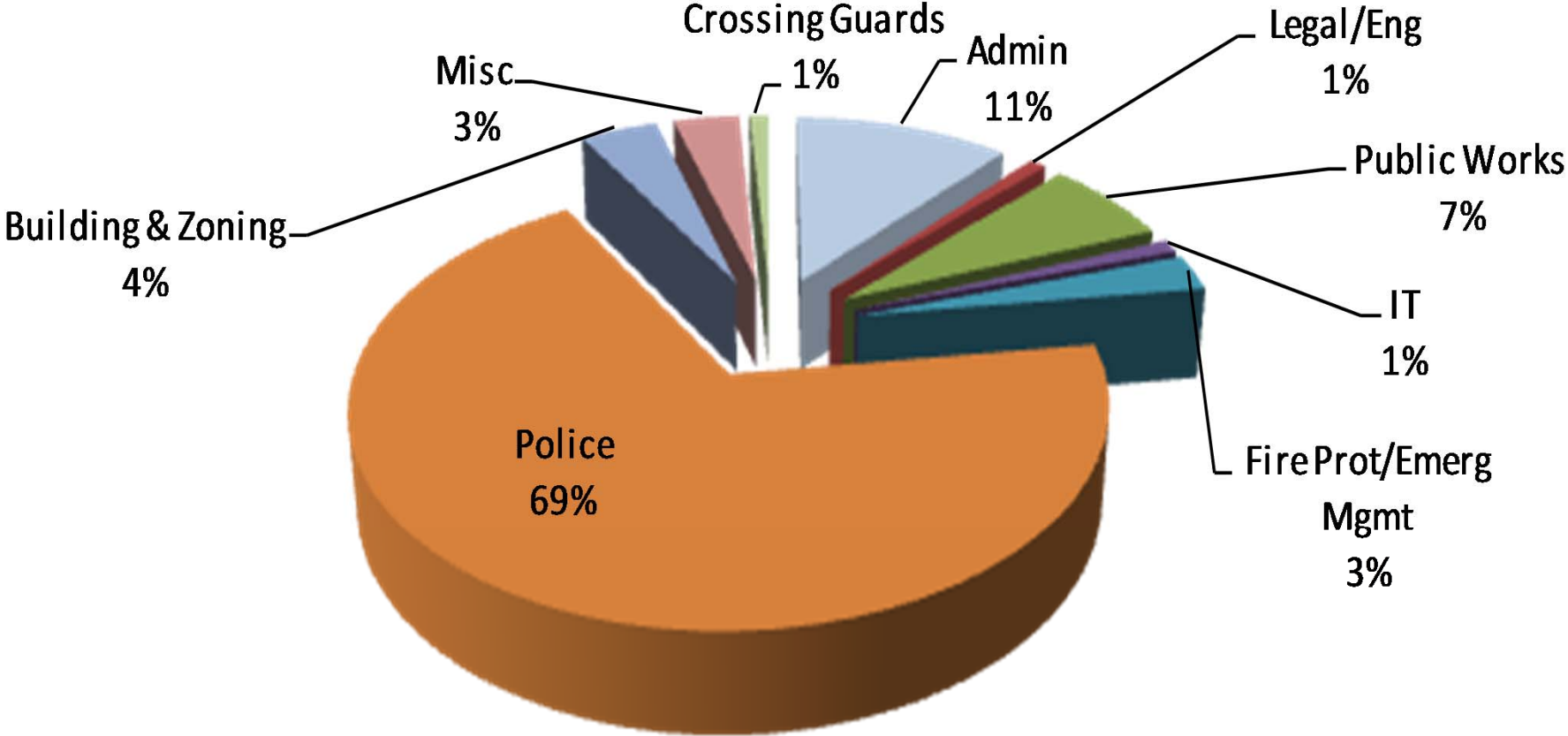
- 0.5% Earned Income Tax on resident and non-resident workers
- Estimated revenue of \$5,500,000 in 2016



# Earned Income Tax



# 2016 General Fund Expenditures



# Other Fund Highlights



# Parks and Recreation Fund

- Revenue from Real Estate Tax, program fees and charges for service
- 2016 -- \$1,318,563
  - Park Maintenance
  - Administration
  - Programs





# Investment Fund

- Holds assets from sale of water and sewer facilities
- Interest income used to support General Fund



## Sanitation Fund

- 2016 will be second year of three-year contract
- Cost to residents remains at \$340 annually
- Annual contract costs \$4,096,902



# Highway Aid Fund

- Increase in state funding
- 2016 -- \$1,394,436 in expenditures – up from \$920,889 in 2015
  - Highway Construction/Rebuilding
  - Snow Removal
  - Street Signs/Signals



# Capital Reserve Fund

- \$2,405,860 in capital projects
  - Administration
  - Police
  - Parks and Rec
  - Stormwater
  - Public Works
  - Traffic Signals



# Capital Plan Highlights

- Administration/IT
  - Springbrook Software – automate purchase orders
  - IT Software Upgrades
  - HVAC System Upgrades



# Capital Plan Highlights

- Police Department
  - 9 Vehicles
  - Mobile Data Terminals
  - Roll call room upgrades





# Capital Plan Highlights

- **Parks and Recreation**
  - **Firefighter's Park Improvements**
  - **Community Park Improvements**
  - **Security Cameras**
  - **Equipment Replacement**



# Capital Plan Highlights

- **Stormwater - Drainage Improvements**
  - Langhorne Gables, Hillside Ave, Parkland Road Drainage
  - Ongoing DPW





# Capital Plan Highlights

- Public Works
  - Vehicles
  - Equipment
  - Roadway Improvement Plan
- Fire Marshal
  - Vehicle



# Concluding Comments

